

Aarsleff Ground Engineering Company Profile



AARSLEFF

ABOUT AARSLEFF

Aarsleff Ground Engineering is a subsidiary of Per Aarsleff A/S, one of Scandinavia's leading civil engineering contractors. Since entering the UK market in the late 1980's the company has grown to become one of the country's leading Driven Piling and Ground Engineering contractors specialising in:

- Driven Precast Concrete Piles
- Steel Bearing, H-Section & Timber Piles
- Mini & SFA Piles
- Soil Nails, Ground Anchors, Drilling & Grouting
- Sheet Piles, King Post Wall & Retaining Structures
- Bored Piles
- CFA Piles

Through a programme of continuous investment Aarsleff's sister company, Centrum Pile Ltd, has established a state-of-the-art manufacturing facility in Nottinghamshire from where it supplies precast reinforced concrete piles to service both Aarsleff's contracts and its own client base.

Aarsleff offer a vast array of real-world geotechnical solutions to meet the needs of its customers as well as successfully developing long-term partnerships, by gaining a thorough understanding of unique construction requirements and delivering cost-effective bespoke solutions, on time and within budget.



A PROUD HERITAGE

A quantum leap in the company's history came when Per Aarsleff A/S became listed on the stock exchange. Today, this success is reflected in the price of the shares; a sign of the investors trust in the company.

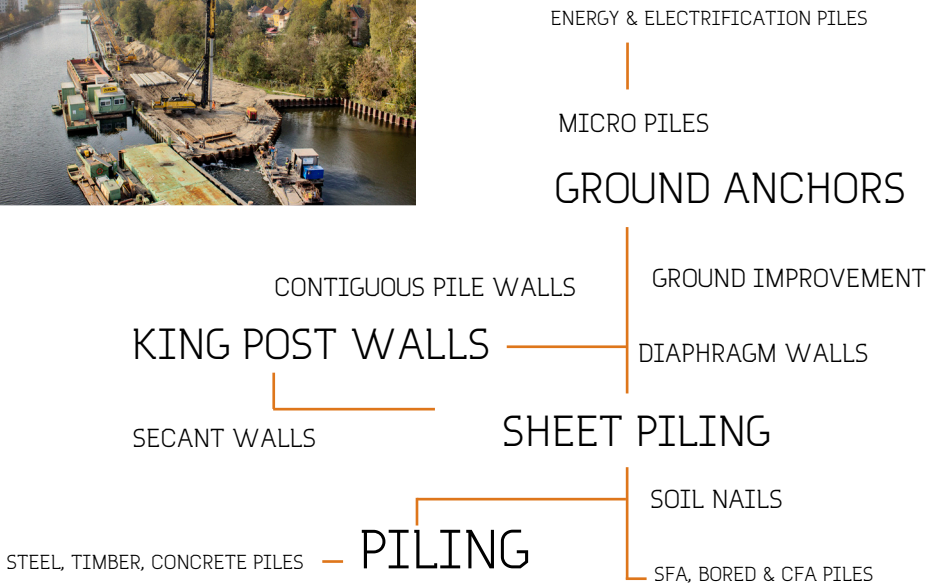
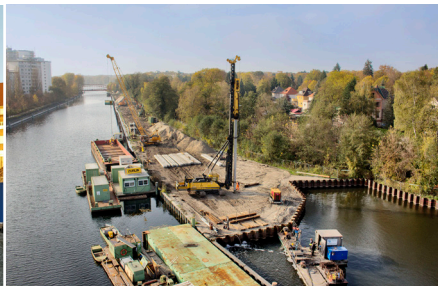
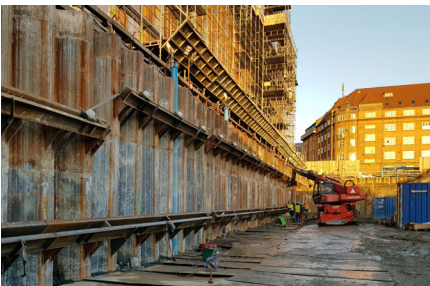
On 4 January 1947, the 29-year-old Per Aarsleff, MSc in engineering, left a secure position with the Danish state. He borrowed 10,000 Danish Kroner from his father's life insurance, bought an excavator, rented two more and opened a lignite field near Fasterholt in Central Jutland.

1947

1984

1970s

In spite of general economic downturn, the 1970s was a very busy period for Aarsleff. There was a great demand for piling and Aarsleff were driving piles for large-scale projects, circa 10,000 running metres of piles.



All subsidiaries diversified their product and services portfolio to offer a variety of pile types and specialist geotechnical solutions making the Aarsleff Ground Engineering segment a highly competitive expert in its field, growing rapidly to become one of Europe's most trusted and experienced ground engineering contractors.

2000s

1990s

Aarsleff gained expertise within electrification of railways, and the piling division was soon very busy driving piles for the Danish rail network. The specially developed piling rigs then found their way to Spain, Germany and Poland. In addition to the Centrum pile factory in Denmark, Aarsleff Ground Engineering now have pile factories located in the UK, Sweden, Germany and Poland. Indeed, the Aarsleff Group is the largest pile producer in Northern Europe.



- Vejle, Denmark
- Newark, UK
- Kutno, Poland
- Kollanda, Sweden
- Germaringen, Germany

STEP INTO THE BLUE

"Aarsleff is a specialist contracting company with a heritage. We were founded in 1947 by Danish Engineer Per Aarsleff. Though Per Aarsleff is no longer with us, his core values and company philosophy have become the backbone of the Aarsleff Ground Engineering organisation today"

LIFE & HEALTH

Life & Health

Protection of human life is of the highest importance to Aarsleff. The safety of its employees, business partners and users of the facilities erected by the company is its highest priority. This is evidenced by Aarsleff's ISO45001 certification. To achieve this award, Aarsleff had to provide full evidence on every aspect of its OHS management, including a focus on continual improvement and investment in staff training. The safety and wellbeing of its people is Aarsleff's core value and should provide its customers with an even greater level of confidence that, working with Aarsleff is a choice well made.

TRUST

Trust

Aarsleff is open and transparent in all its dealings, building a reputation for being trustworthy, providing timely, accessible and appropriate information and keeping its people and clients well informed. Owing to its knowledge, experience and commitment, as well as the use of the latest technologies and commitment to quality, day-by-day Aarsleff builds trust with its clients and business partners. It is the company's policy to use a quality management system meeting the requirements of ISO9001 as a normal part of business activity to fully and consistently fulfil the needs and wants of its customers.

RESPONSIBILITY

Responsibility

Corporate Social Responsibility and Sustainable Development play an integral role in Aarsleff's business operations. Ensuring consistent profitability and a strong position in the market, it also takes into consideration the impact of its operations on business environment, natural environment and society. Aarsleff consistently builds its position as a responsible Employer, enjoying a good reputation among both its employees and local community. It is committed to act in a socially responsible way in its dealings and strives to eliminate discrimination on any grounds and to promote equality of opportunity.

EXPERTISE



Aarsleff's expertise as Ground Engineers is evidenced not only by its 30 years in UK construction and its dedicated staff, but in the decades of satisfied customers who have come to expect nothing but the best from Aarsleff Ground Engineering. Aarsleff has an impressive UK-based fleet of plant and equipment for all of its services and also access to Europe's largest fleet of rigs and machinery. From small slope retention in a back garden, through to multi-million pound installation projects, Aarsleff brings a wealth of knowledge and experience to any project.

Aarsleff Ground Engineering works closely with its client partners from concept and planning stage through to delivery and handover. Speed and efficiency, both major considerations for today's built environment, are designed into operations, but always against a backdrop of safety and good working practise.

With all major accreditations held, Aarsleff is the ground engineering partner of choice for any construction project. Aarsleff works within the Commercial, Residential, Energy and Infrastructure construction markets, delivering smart sustainable solutions to the country's most technically challenging projects. Its philosophy is to offer a comprehensive package of multi-discipline operations, that ensures the best levels of service, quality, safety and value. Its full in-house technical, estimating, design, manufacture and installation teams gives Aarsleff the capability to design and install various types of solutions for a variety of clients and projects.

**FEDERATION
of PILING
SPECIALISTS**

**CPD
CERTIFIED**
The CPD Certification
Service
Collective Mark

**BRITISH
DRILLING
ASSOCIATION**

**NORTHERN
POWERHOUSE**

HEALTH AND SAFETY



Health and safety is an integral part of all its business operations. Aarsleff Ground Engineering are ISO45001 certified, and have gained a prestigious Gold award from The Royal Society for the Prevention of Accidents for the ongoing focus on zero accidents within the workplace.

Aarsleff is committed to complying with current laws and safety requirements, just as it is at considering all aspects of occupational health and safety – from planning to execution of works. Since the nature of Aarsleff’s work has the potential to pose a serious hazard to the health and life

of its employees, business partners and end users of the investments for which it is employed, its highest priority is of health and safety, where Aarsleff will constantly monitor and improve on its safety issues on an on-going basis (with training and preventive measures).

All employees at Aarsleff are knowledgeable of health and safety issues relating both to themselves and their colleagues, and are obliged to take relevant measures of identifying unacceptable conditions. Safety considerations are a vital element of our periodic performance appraisals and the Aarsleff performance bonus scheme.



SUSTAINABILITY



Aarsleff understands that the need to preserve its world is of the utmost importance, therefore its manufacturing and operation processes are planned and executed with the least possible impact on the environment.

Sister company Centrum Pile are doing all it can to be greener, achieving optimum recycling targets and even helping the local wildlife. Together, they have taken great steps to reduce their carbon footprint by reducing the cement content of the concrete by 30% which results in a lower embodied CO2 as well as improved plastic and hardened properties of the concrete. Aarsleff and Centrum Pile continuously monitor and adapt working practices and equipment to improve the environmental impact of noise and vibration on site.

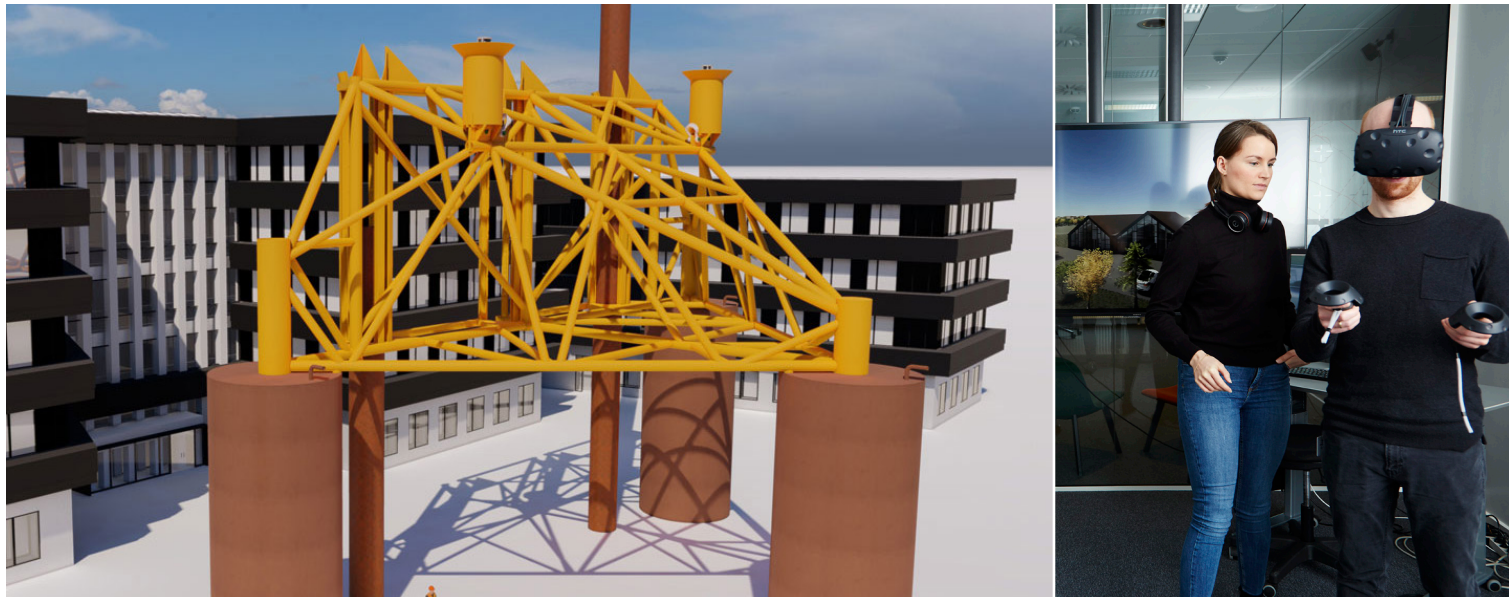
The offsite manufacture of Aarsleff’s precast products provides several benefits with respect to QA, reduced energy and carbon consumption, durability and low waste, while their driven installation benefits from low spoil production. Aarsleff’s geotechnical engineering practises include the use of alternative, environmentally friendly materials, and the reuse of waste materials where possible.

Through research projects and close collaboration with academic institutions, Aarsleff Ground Engineering make sure its techniques are at the forefront of innovation, so that it can offer the most effective, smart and sustainable all-round solutions for our customer’s challenges.



Nottinghamshire
Wildlife Trust

INNOVATIVE TECHNOLOGY



The population of the world is rapidly increasing, all of whom need housing as well as social, transportation and utility infrastructure. Ground engineering touches almost every aspect of modern life and Aarsleff's work has become a fundamental component in creating the modern landscape we live in and experience every single day.

Aarsleff has earned a reputation for developing innovative technological solutions to improve the value, quality and sustainability of projects across the entire construction spectrum, from commercial sheds to railways and energy stations, benefiting clients, stakeholders and communities alike - both locally, nationally and internationally.

Aarsleff Ground Engineering partnered with a 3D technology and software development studio to develop a new virtual reality application for the construction and ground engineering industry.

With half a million workers set to retire over the next 10 years, the application has primarily been designed to address the growing skills shortage in the construction sector with a view to help attract the next generation of digitally native gamers into the industry.

Traversing through Rail, Commercial, Residential, Mining and Industrial zones, the user is able to take a closer look at rigs and machinery and experience the ground engineering techniques that the ground engineering specialist deliver on site every day – both above and below ground.

DESIGN & ENGINEERING



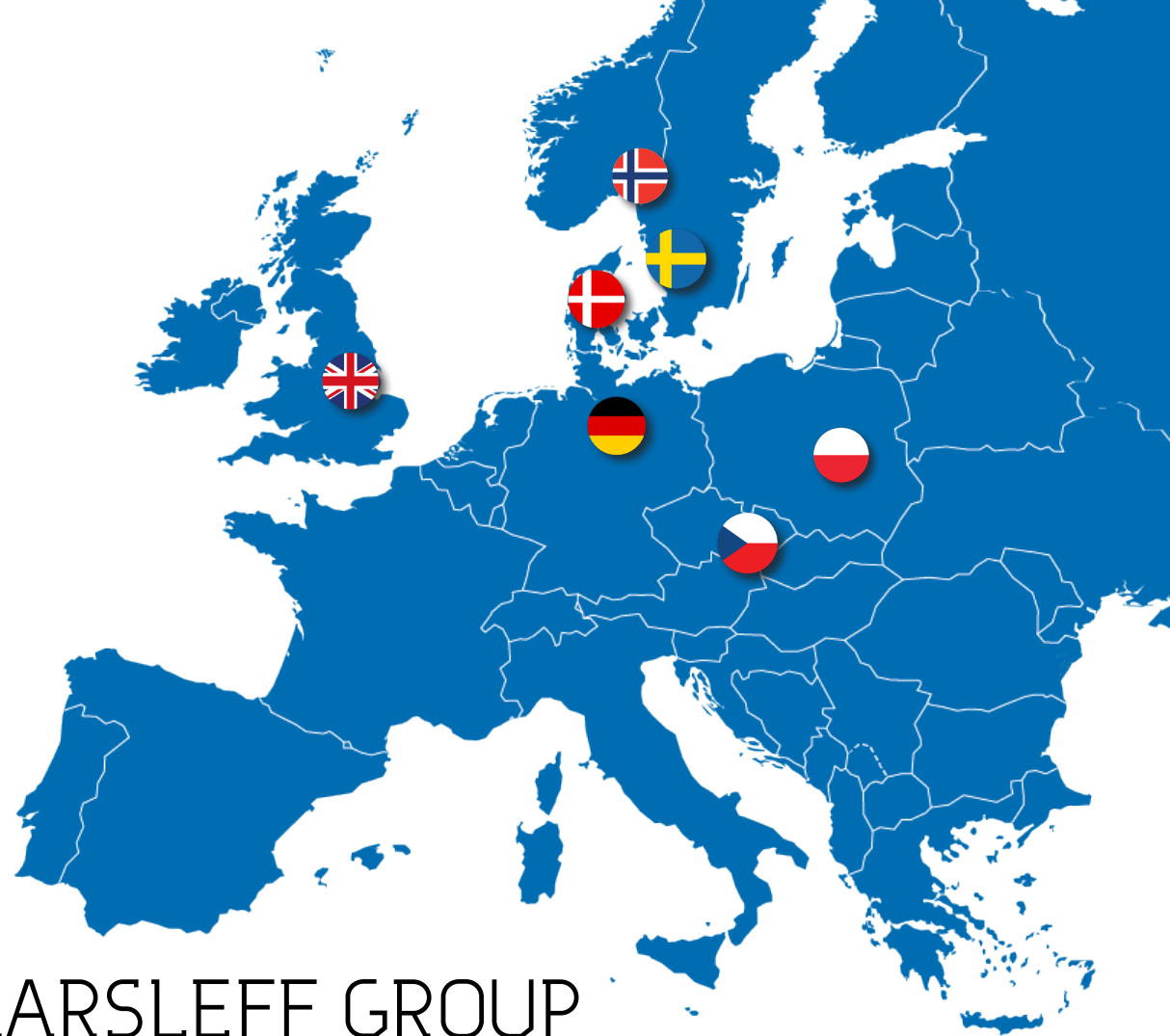
Design & Engineering is a fundamental part of every construction project. That's why, at Aarsleff, we have an in-house team of dedicated civil, structural, marine, mechanical, geotechnical and process engineers, who work at a high international level to design permanent and temporary works throughout Northern Europe.

Aarsleff's team propose new and alternative solutions in connection with the design of foundation and ground engineering projects.

Theoretical knowledge combined with a thorough and systematic gathering of experience allows them to contribute the best and most cost-effective solutions to complex construction work.

They provide consultancy not only in the design phase, but also if it is required during the practical execution of the work. Design & Engineering implements and assists with development projects, both internally and in collaboration with universities in the form of examination projects and industrial PhD projects.

Aarsleff's expertise makes them highly competitive and ensures optimum implementation of the client's task. In addition, the close collaboration between the design and construction teams stimulates innovation that benefits not only clients but also the communities that the projects serve.



THE AARSLEFF GROUP

The Aarsleff Ground Engineering Group devises, plans and delivers a variety of projects across the infrastructure, marine, residential, rail, commercial and energy construction markets. Established in 1947, the Aarsleff Group is composed of three segments - Construction, Pipe Technologies and Ground Engineering. Specifically, the Ground Engineering division work together to solve technically challenging ground related problems in most parts of the world.

Aarsleff carries out a broad range of ground engineering works. In addition to driven and drilled pile foundations, they design and install construction pits with retaining walls such as sheet pile walls and combi walls, secant pile walls, diaphragm walls as well as driven and drilled king post walls. Their expertise also comprises anchoring, nail and injection work, ground improvement, drilling and grouting, geotechnical investigations and groundwater lowering systems - adapted to suit the needs of the individual markets.

Aarsleff has an impressive collection of rigs and machinery and access to Europe's largest fleet of ground engineering rigs. They offer a comprehensive and detailed design facility, providing a full design service from placement of order to installation of final structural member.

With skilled and professional teams based in Denmark, Germany, Poland, Sweden, Czech Republic, Norway and the UK, the Ground Engineering subsidiaries are equipped to work on several types of site, delivering specialist ground engineering disciplines, all under one name and one specialist contractor for their clients' benefit. Speed and efficiency, both major considerations for today's built environment, are designed into operations, but always against a backdrop of safety and good working practice.

UK OFFICES

Scotland Office

Suite 9,
Kirkintilloch Business Centre,
74 Townhead,
Kirkintilloch,
Glasgow, G66 1NZ
Phone: 07435 806652

North East Office

Hoults Yard,
Walker Road,
Newcastle upon Tyne,
NE6 2HL
Phone: 01636 611140

Yorkshire and North West Office

Unit 7,
Carcroft Enterprise Park,
Carcroft,
Doncaster,
DN6 8DD
Phone: 01636 611140

Head Office

Hawton Lane,
Balderton,
Newark,
Nottinghamshire,
NG24 3BU
Phone: 01636 611140

South West & South Wales

Henleaze House
13 Harbury Road
Henleaze
Bristol, BS9 4PN
Phone: 01636 611140



We also have subsidiaries in Denmark, Germany, Sweden, Poland, Czech Republic and Norway

Piling

- Driven Piles
- Precast Concrete, Steel, Timber
- Augered Piles
- Continuous Flight Auger (CFA)
- Cased CFA Piles
- Rotary Bored Piles
- Auger Displacement
- Restricted Access Piles
- Sectional Flight Auger (SFA)
- Rotary Auger Bored Piles

Specialist Retaining Walls

- Sheet Piling
- Temporary and Permanent
- King Sheet Piled Walls (KSP)
- Cofferdams
- Retaining Walls
- Propped Walls
- Anchored Walls
- King Post Walls
- Contiguous Pile Wall
- Secant Pile Wall

Geotechnical

- Drilling and Grouting
- Compaction Grouting
- Permeation Grouting
- Bulk Infill
- Soil Nails
- Temporary and Permanent
- Ground Anchors
- Temporary and Permanent
- Rock Bolting/Steel Dowel Works
- Drilling for earthing rods



AARSLEFF

Aarsleff Ground Engineering Ltd

Hawton Lane, Newark, NG24 3BU

+44 1636 611140

info@arsleff.co.uk

www.arsleff.co.uk
