

**FT / PHOTOBOOTH**

Take a look at the best photographs captured by you

**FT / NEWS**

Keep up-to-date with the latest news and updates on projects, fleet and machinery and employees

**FT / STEQ**

Recognising Safety, Training, Environment and Quality across the business

**AARSLEFF**

Aarsleff

ISSUE NO.22

NOVEMBER/DECEMBER 2020
STAFF NEWSLETTER

Welcome to the last staff newsletter of 2020. I am pleased to report we have achieved a positive result to mark the end of our financial year. Thank you to each one of you for your continued commitment and hard work – you have contributed to the success of our business and as a result, we all have a better chance of long-term continued success. I am not going to wax lyrical about the negative impact of Covid-19 on the business, as I see it, we should applaud our positive response. We have become smarter, more focused, and resilient during the past 7 months, we have also worked closer as colleagues and friends.

Covid-19 has acted as a social catalyst on many levels, igniting the need for innovation and technology to enable better care, communications, and management across the country. Local restrictions may become more frequent in the medium term if these are seen by successive governments as the best method of avoiding the worst effects of a pandemic but the fundamental advantages of social integration over social isolation will remain the primary driving force. We have an opportunity to respond in a positive and creative way and I look forward to seeing the innovative ideas which the current crisis will generate. Indeed, I discuss the idea of 'social togetherness' in our new podcast which we launched at the beginning of the October. Aptly named 'Voices in Engineering: The Aarsleff Podcast', the series has been streamed well over 100 times and features industry experts who share their thoughts and ideas on a variety of engineering topics from design to delivery. I invite you to listen to one of the five 30-minute episodes and continue to support and share the series which is now published on our website, Spotify, and iTunes.

Evident in the last 4 years, we have become the preferred partner of choice in e-commerce builds, with our complementary services working hand in glove with what their build strategies demand. The UK has the most advanced e-commerce market in Europe with more and more consumers choosing to make purchases online. In 2020, as high as 87% of UK households made an online purchase within the preceding 12 months, however only 27% of the population regularly buy online highlighting the tremendous scope in our future opportunity. We continue to build up a portfolio and a deliverable service offering that is almost tailor-made to this type of industry – one that is increasingly growing.

One civils project that continues to show off our geotechnical capabilities is the Sunderland Strategic Transport Corridor, with our ground anchor installation works receiving further press in industry wide magazines. Through a collaborative pre construction design process with the client, as well as agile reactions on site to overcome changes to the ground conditions on all stages of the project, we were able to install quality ground engineering products safely, whilst keeping our customer happy with our performance. Well done.



Our order book looks positive across all departments. Our current anticipated fiscal turnover for financial year 2021 is projected at +£34m, with some 30% future orders secured.

In more good news, the Midlands Enterprise Awards named Centrum pile the 'Best Concrete Product Supplier in Nottinghamshire' in 2020. The prestigious award marks the stellar efforts of our Centrum team and further highlights the hard work we've put in to drive innovation and competition within our sector.

We are all unique, we draw strength from our combined high-performance and growth mindset which has now become infectious. We are a very strong, technically led company with tremendous strength in depth, we should all be proud to be part of these special times and continue to inspire each other. We are fortunate to be complimented by a gifted, skilled and spirited workforce, which delivers our services in line with our values, hence the high degree of positive customer feedback.

We pride ourselves on being a values-led firm with a strong company culture centered around unity and hard-work. It is a shared ethos that pervades all areas of the business which you should all know and understand now as, 'Step into the Blue'.

Characteristically resilient in the face of volatile trading conditions brought on by Brexit and Covid-19, we will continue to bring confidence to those constructing the landscape of tomorrow.

...Kevin Hague,
Managing Director



Photobooth



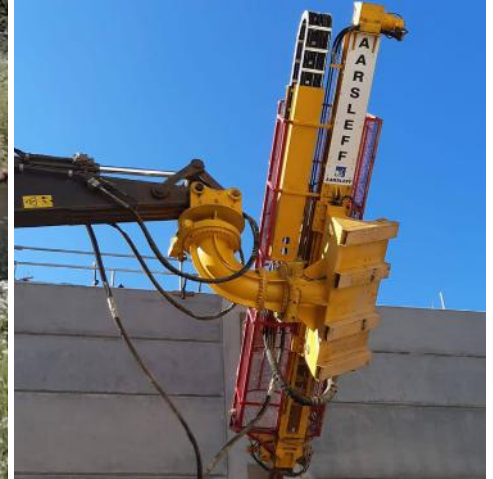
Send your best photos to:

louisecrawshaw@aarsleff.co.uk or Whatsapp to 07435806652

Coalville front cover photo was sent in by Sam Riley



KPW, Perry Barr, Birmingham - [Steve Gilbank](#)



Anchors, Sunderland STC - [Robert Speakman](#)



Driven Steel Tube, Gateshead - [Piling Team](#)



King Post Sheet Piling, Aberdeen - [Jim Wilson](#)



Sheet Piling, Manchester ICON - [Jim Wilson](#)



Ground Anchors, Sunderland STC - [Jack Gardner](#)

>> CHECK OUT MORE PROJECT COVERAGE ON WWW.AARSLEFF.CO.UK

STEQ Space

SAFETY. TRAINING ENVIRONMENT QUALITY



Robert Speakman,
STEQ Manager

A lost time manual handling accident at the end of September saw a seventeen-month lost time accident free period come to an end within Aarsleff. A great achievement and one which we must now go on to better.

Manual handling as we know is common in almost all daily activity. It is likely that 'cold muscles' played a part in the injury and consequently this article should serve as a reminder to you all to 'WARM UP'. That said, a review of our current working operations is ongoing with a view to eliminating this particular activity.

Centrum on the other hand have achieved another month without a lost time injury, with a running total of 5 months.

We must not be complacent, the above shows what we can achieve and by focusing on the lower severity accidents and implementing measures to prevent reoccurrence we can drive accidents down even further.

On a final note I feel the need to remind everyone yet again with respect to Covid-19. As the second wave appears to be here, possibly being even more prevalent than the first, we need to ensure our controls are fully documented and more importantly followed at all work locations. We should not let complacency and familiarity with our work colleagues and working practice cause bad habits to creep in.

The HSE are actively carrying out visits to all manner of workplaces to review of the Covid Secure controls.

We should also be mindful that how we behave at work increases risk at home to our loved ones and likewise how we behave away from work can affect colleagues in work.

An updated Covid information pack has been circulated to all managers and includes amongst other things the Build UK flowchart, which details measure to take in relation to a suspected case and subsequent isolation / testing etc.

Please use the tools we have created and let's ensure we are correct in what we are doing, and more importantly as safe as we can be.



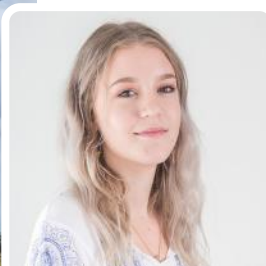
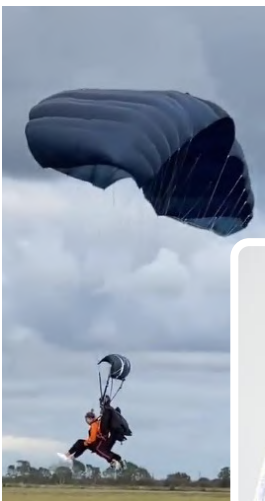
STAY SAFE – WORK SAFE – BE SAFE



AarSTAR of the month



The 'Star of the Month' feature is to celebrate members of our company who have gone above and beyond expectations and deserve to be recognised and thanked for their achievements. This month we would like to congratulate...



Libby Butler

“ I would like to nominate Libby for her fundraising Skydive for the Anthony Nolan Trust. She was very brave for jumping out an aeroplane and raised £510 for the charity, which does vital work in stem cell research and transplantation for leukaemia and hematopoietic cancers. Well done Libby you are an inspiration to us all! ”

...Mark Smith, Commercial Director

If you would like to commend a member of staff for our next newsletter please send through your nomination and the reasons why to louisecrawshaw@arsleff.co.uk



From the HR desk...

So Colleagues and Friends we are here again in lockdown – probably this time more challenging as the whole nation seems weary of COVID, the limitations it places on our freedoms, daily lives, contact with others and winter is upon us.

Within our COVID procedures issued prior to lockdown there are some useful tips on how to protect your Mental Health during this period – this is very important for you, your families, and your colleagues. However easier said than done!

A reminder of the headlines so you can take a look at the tips

- Lighting
- Plan your week
- Help others
- Limit your news in take
- Stay Connected
- Stay fit
- Make some time for your self
- Positive habits
- Practicing mindfulness
- Don't be afraid or ashamed to ask for help

Ask for help – our Employee Assistance Advice helpline is on hand and free – with a 24 hour confidential service covering a whole range of worries – with professional in each field on hand to help you.

Tel No. 0800 047 4097 – make a note of it in your phone now, you never know when you might need it.

<https://www.gov.uk/government/publications/covid-19-guidance-for-the-public-on-mental-health-and-wellbeing/guidance-for-the-public-on-the-mental-health-and-wellbeing-aspects-of-coronavirus-covid-19>

The above link to this guidance on the Government website not only provides useful more in depth advice on protecting your wellbeing and mental health, but it has many specific links to assistance that is available to help you if you are in crisis.

My main message is – there is a lot of help out there and we can guide you towards it should you need it – reach out and we can support you with assistance from these outside agencies.

Positive thoughts to close out on – follow the Government advice, follow your COVID work procedures and then hopefully we can all enjoy a Christmas/Winter holiday when we can see family and friends even if in a limited way.



...Heather Jones, Business & HR Manager

HANDS FACE SPACE
#StepInToTheBlue

IT & Network

Keeping your computer up to date

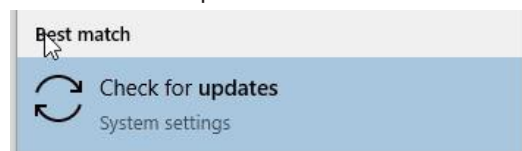
You may be aware that Microsoft release updates for your computers every month on "Patch Tuesday" which is the 2nd Tuesday of every month. Critical updates are installed automatically and you do not have a choice in this. However some updates will wait for you to manually restart your computer. At some point you will be forced to install these less critical updates and this can come at an inconvenient time. You can however pre-empt this by regularly checking to see if there are updates queued.

Check for Updates:

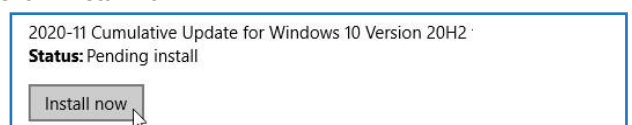
- Type "Updates" into the Search bar next to the start menu



- Select "Check for Updates" from the list



- Click "Install now"



Once done it will ask to reboot if required.

Doing this on a weekly basis will keep your computer up to date and will reduce the time you are without your computer during a forced update.

...Simon Pick, IT & Network Supervisor



Spotlight on Toby Sharman

My career at Aarsleff Ground Engineering started as a topman in August 1999, when the company was still called Per Aarsleff UK.

After several years, I was given the opportunity to expand my skills and become a rig driver, and then a foreman on piling projects. I enjoy travelling and working on the variety of projects, from sheds and housing developments, to civil and infrastructure schemes. Some of my favourite projects were for windfarms, where we installed the piles for the turbines. Even though over the years people have left and new people have joined, I have also enjoyed working with the site guys and being a member of the piling team.

In 2019, I had the opportunity to train and become a Site Supervisor, with my first project to manager being the Bicker windfarm substation near Sleaford. For this project, we had two rigs and installed over 1,500 precast concrete piles. My role on site is to liaise with the client and our operations team, making sure our piling works run smoothly and sorting any issues that occur.

I have also been the supervisor for a lot of our large piling projects, including Purfleet, Kingsnorth and at Littlebrook. These have been some of my most enjoyable projects to look after, with Littlebrook being one of my most challenging as well. On this project, we had a lot of logistics, moving piles around the site and utilising shunters and cranes. We also encountered difficult ground conditions, which required close communication with our client to ensure all the piles could be installed. Overall, we were able to overcome these challenges thanks to the great team.

I would like to thank everyone who I have worked with whilst being at Aarsleff; from those who gave me the opportunity to progress my skills, to the guys I have worked with within the piling team. I have been able to work on some great projects and I am proud to be a member of the Aarsleff team.



Toby Sharman



Bicker Windfarm



Littlebrook Team

Aarsleff

NOVEMBER/DECEMBER 2020
STAFF NEWSLETTER

HAVE YOUR SAY!

We want to hear from you with stories, pictures, fundraising efforts and anything of note which we can include to make this newsletter more beneficial and interesting to you.

Drop Louise Crawshaw an email with your suggestions to:
LouiseCrawshaw@aarsleff.co.uk

WWW.AARSLEFF.CO.UK
CONNECT WITH US!



Ground Anchors, Sunderland Strategic Transport Corridor Phase 3