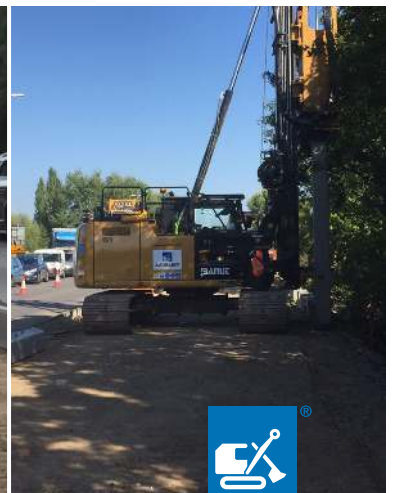


# Soil Stabilisation Works, A33 Reading

Driving of piles for A33 road widening and stabilisation.



**AARSLEFF**

On behalf of main contractor Wills Bros Civil Engineering Ltd, Aarsleff Ground Engineering were awarded the contract to carry out soil stabilisation works to one of Reading's busiest roads, the A33.

Aarsleff's work forms part of Reading Borough Council's 'Mass Rapid Transit (MRT) South' scheme to carry out a series of highway improvements along the A33 corridor, focused on improving public transport journey times by building an inbound bus lane between the A33 junctions with Longwater Avenue and Island Road, and further outbound lanes on the A33 junction to Imperial Way Junction.

Specifically, Aarsleff's work facilitates the A33 widening for the new bus lane. Aarsleff installed 300 No precast concrete piles of 300mm diameter and 4m in length, with its Banut 300 'Midi' rig to stabilise the road embankment.

Wills Bros Ltd is recognised as one of the leading constructors of high quality roads in Ireland, providing an essential role in the national infrastructure development programme.

Contracts Manager Steve Gilbank said "We were pleased to work with Wills Bros delivering this innovative solution by Peter Brett Associates. Along with our sister company Centrum Pile Ltd, Aarsleff designed the 300mm section pre-cast concrete piles to resist the loads imposed by the retained embankment.

With careful planning and the use of one of Aarsleff's bespoke Banut 300 'midi' piling rigs, the piles were installed in 8.5 days, knocking almost 1 week off the anticipated programme".

**Scope of Works**

300 No. 300mm Driven Precast Concrete Piles

**Contractor**

Wills Bros Civil Engineering Ltd

**Client**

Reading Borough Council

**Construction period**

29th August - 8th September 2017

Aarsleff Ground Engineering Ltd, is the UK trading arm of Danish contracting giant Per Aarsleff A/S, and is one of the UK's leading piling and geotechnical design and installation specialist contractors; actively promoting early consultation to ensure each scheme can be Value Engineered to give clients the best service, quality design, safety and value. Aarsleff's strategy and philosophy of investment into the future has resulted in its wholly owned subsidiary Centrum Pile Ltd having the most advanced precast pile production facilities in the UK, producing segmentally jointed precast concrete piles to BS En12794 to Class 1A.

**Contact**

Aarsleff Ground Engineering | [info@arsleff.co.uk](mailto:info@arsleff.co.uk) | Tel 01636 611140